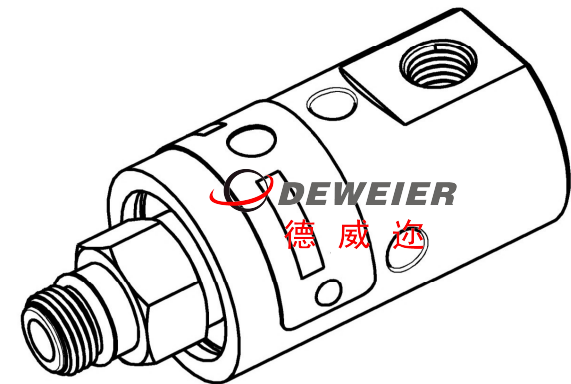
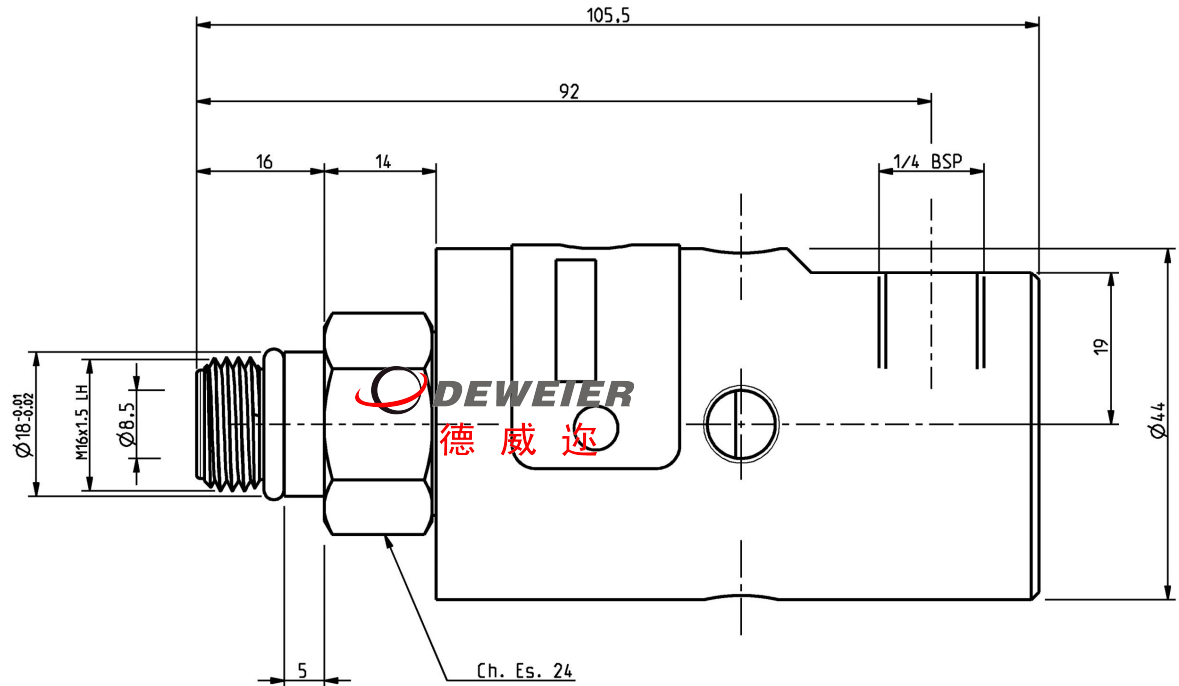
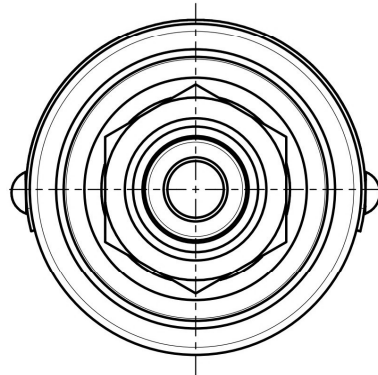


GL006.06

左旋LH



枣庄市德威迩机械科技有限公司

Dewel Machinery Technology Co., Ltd.

技术参数 TECHNICAL PARAMETERS

|               |   |
|---------------|---|
| MAX. PRESSURE | 7.0MPa; (<70Bar)  |
| MAX. SPEED    | 10000RPM;   |
| TEMPERATURE   | -20℃----+70℃  |
| MEDIA TYPE 介质 | Water/cutting fluid/compressed air/ oil<br>水/切削液/压缩空气/液压油 |

使用参数 Working parameters

| 介质 Fluid | 压力 Pressure | 温度 Temperature | 转速 Rotating speed |
|----------|-------------|----------------|-------------------|
| 空气 Air   | 2.0MPa:     | -20℃----+70℃   | 3000RPM           |
| 水 Water  | 7.0MPa:     |                | 10000RPM          |

High precision bearings to be free from constant maintenance.  
Multi-spring design for optimized spring compensation effect.  
Anti-impurity sealing structure.  
Labyrinth water-proof sealing design that avoids bearing failure during vertical operation.

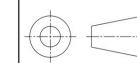
备注：技术参数数据为最大值，并不能同时使用；

The technical parameter data is the maximum value and cannot be used at the same time.

旋转接头  
Rotary joint  
E-mail: sddeweier88@163.com



www.sddeweier.com



TEL: +86 632 5822778  
TEL: +86 632 5832779

P/N: GL006.06