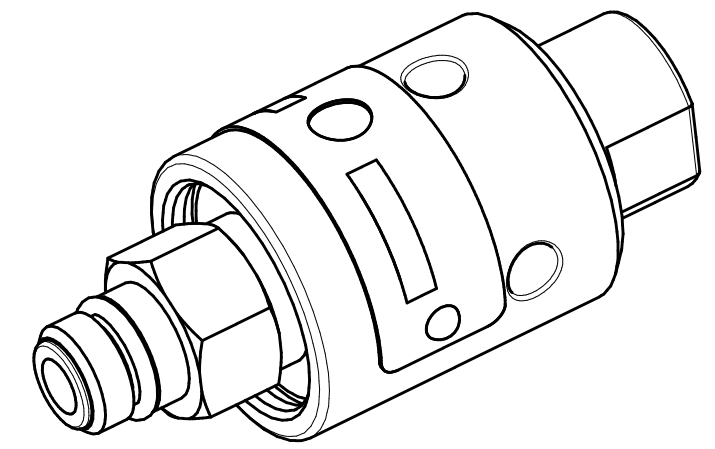
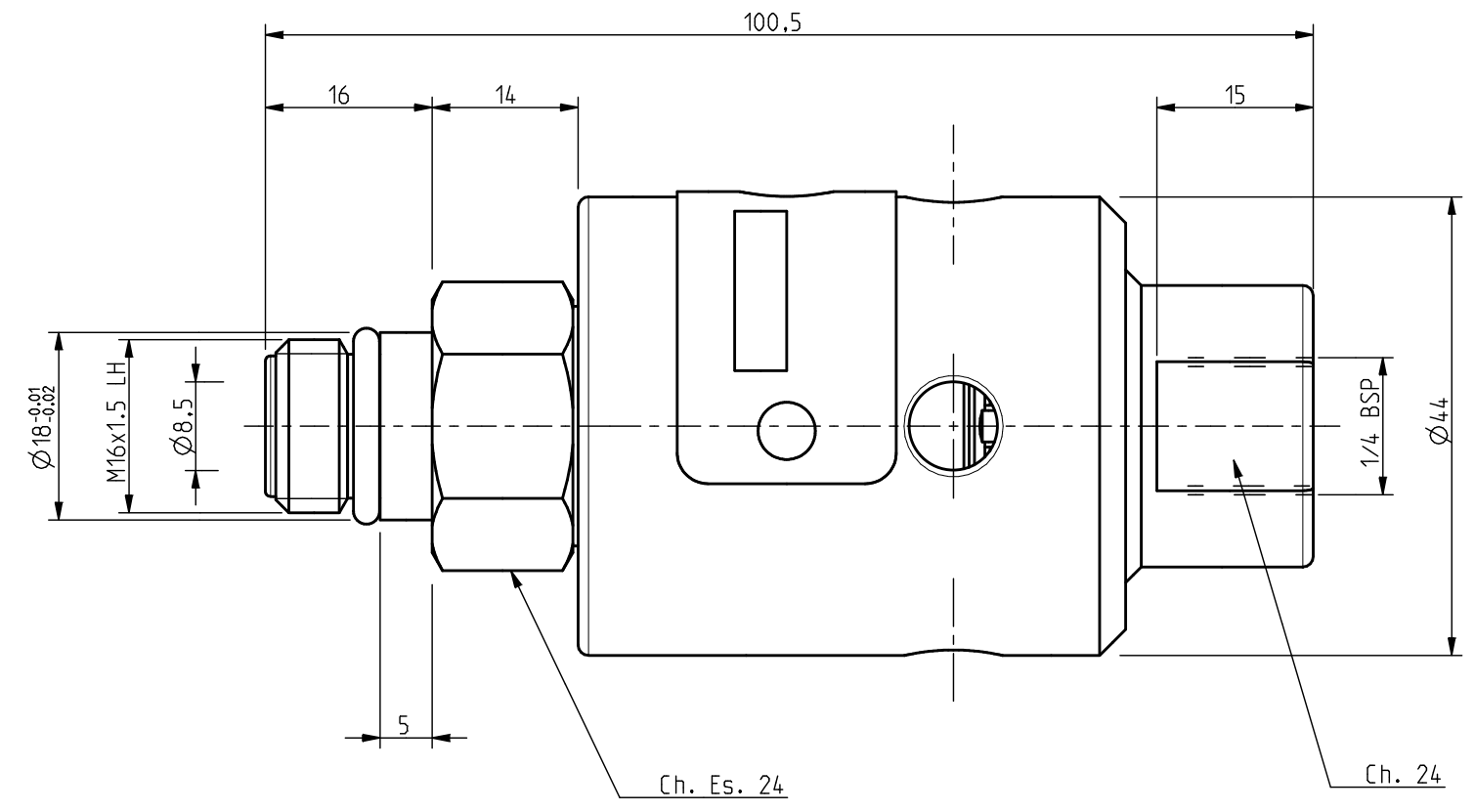
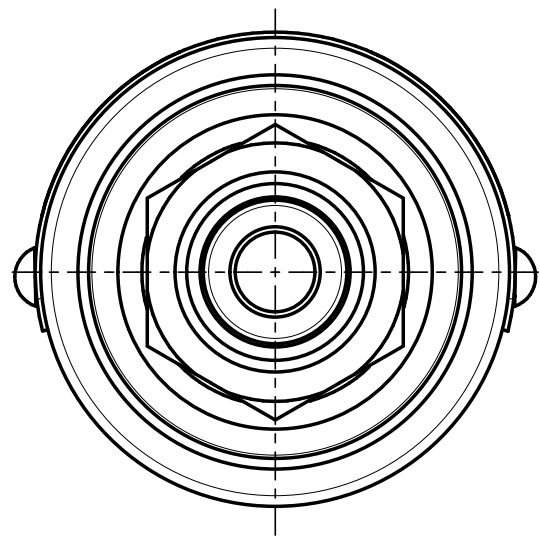


GB006.06

左旋LH



枣庄市德威迩机械科技有限公司
Dewel Machinery Technology Co., Ltd.

技术参数 TECHNICAL PARAMETERS		使用参数 Working parameters			
MAX. PRESSURE	7.0MPa; (<70Bar)	介质 Fluid	压力 Pressure	温度 Temperature	转速 Rotating speed
MAX. SPEED	10000RPM;	空气 Air	2.0MPa;	-20℃----+70℃	3000RPM
TEMPERATURE	-20℃----+70℃	水 Water	7.0MPa;	-20℃----+70℃	10000RPM
MEDIA TYPE 介质	Water/cutting fluid/compressed air/ oil 水/切削液/压缩空气/液压油	High precision bearings to be free from constant maintenance. Multi-spring design for optimized spring compensation effect. Anti-impurity sealing structure. Labyrinth water-proof sealing design that avoids bearing failure during vertical operation.			
备注: 技术参数数据为最大值, 并不能同时使用; The technical parameter data is the maximum value and cannot be used at the same time.					

旋转接头
Rotary joint

E-mail: sddeweier88@163.com

TEL: +86 632 5822778
TEL: +86 632 5832779

德威迩

www.sddeweier.com

P/N: GB006.06